



PLANNING DEVELOPMENT MANAGEMENT COMMITTEE



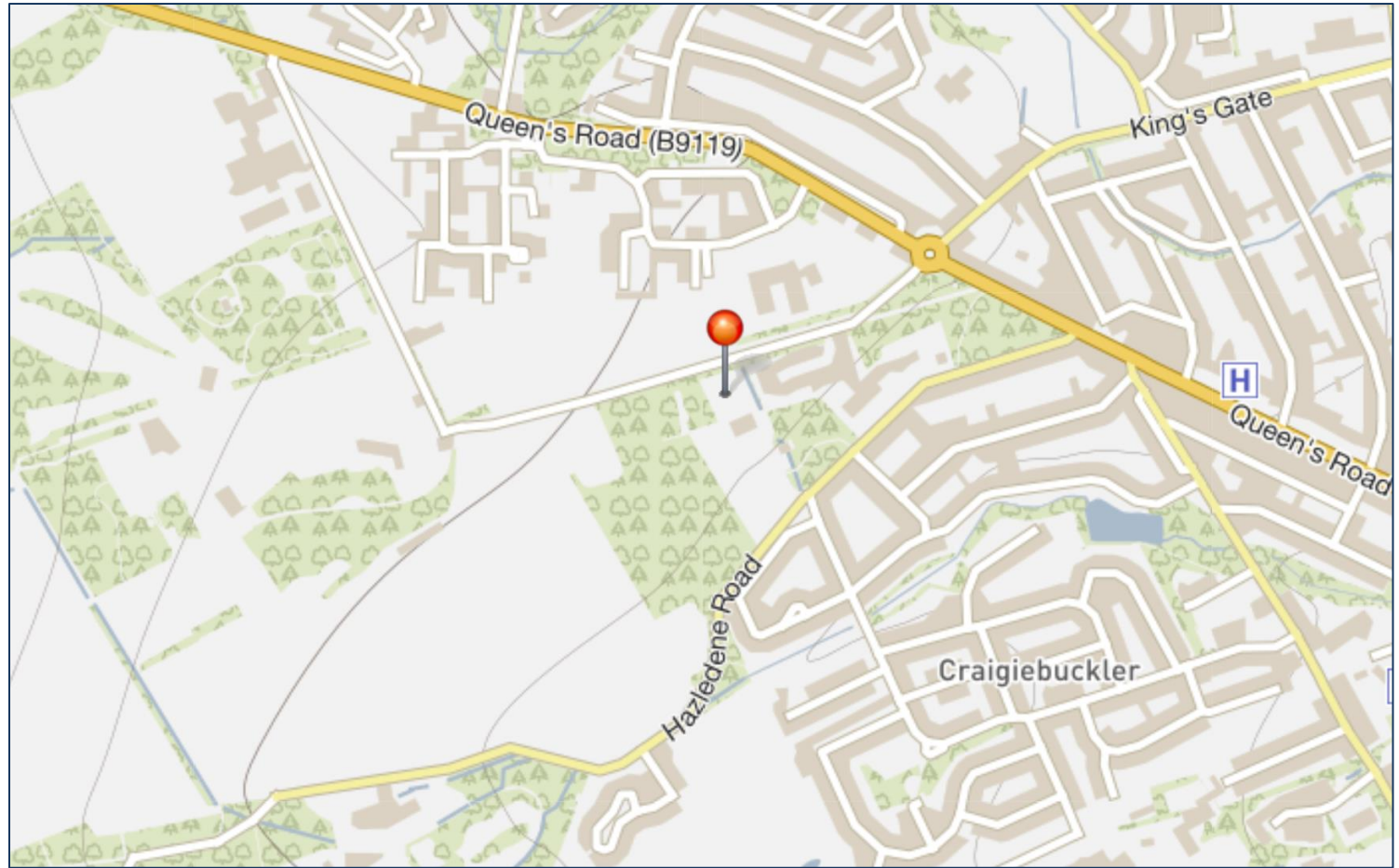
19 August 2021

Installation of modular unit to provide nursery accommodation including forming access road with associated parking and landscaping works

Site At Hazlehead Avenue/ Hazledene Road

Application reference: 210688/DPP

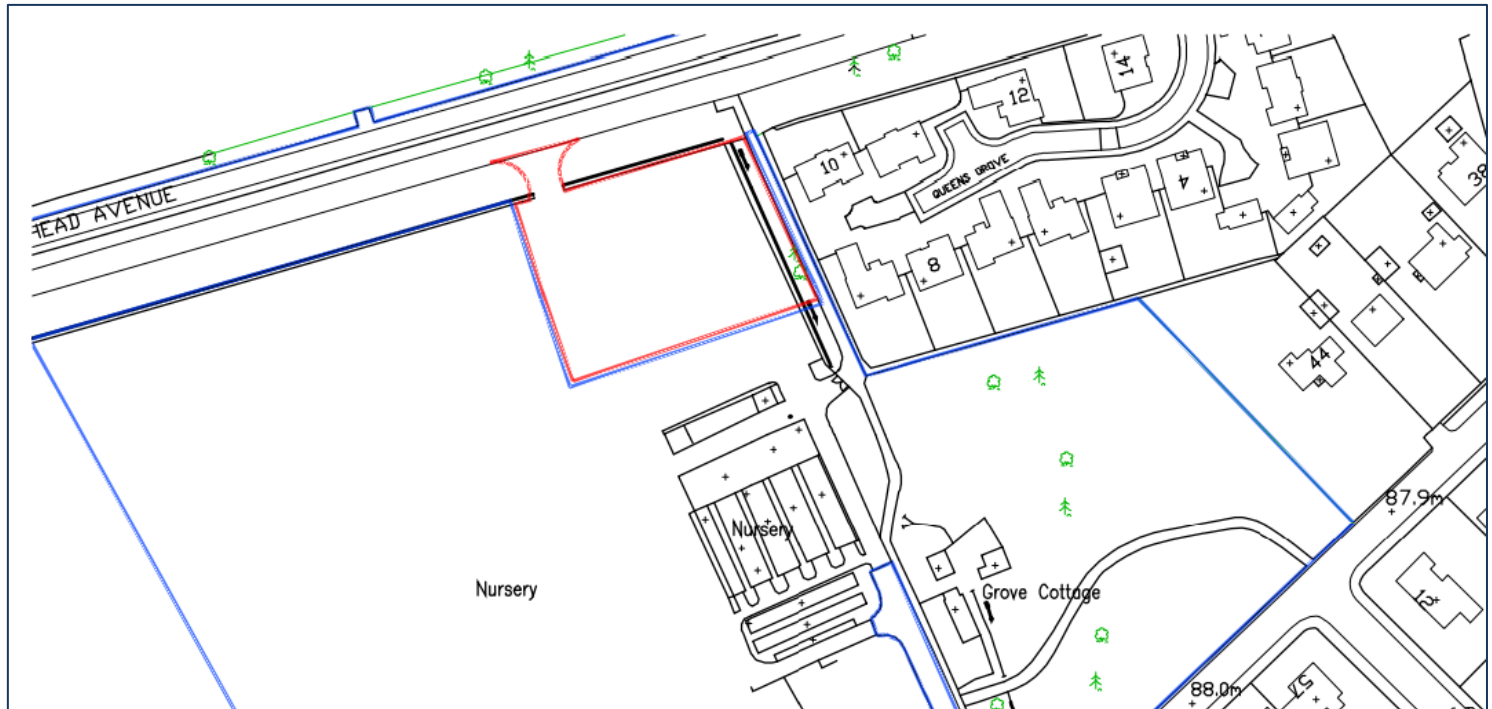
Site Location (GIS) – Wider Context



Site Location (GIS)



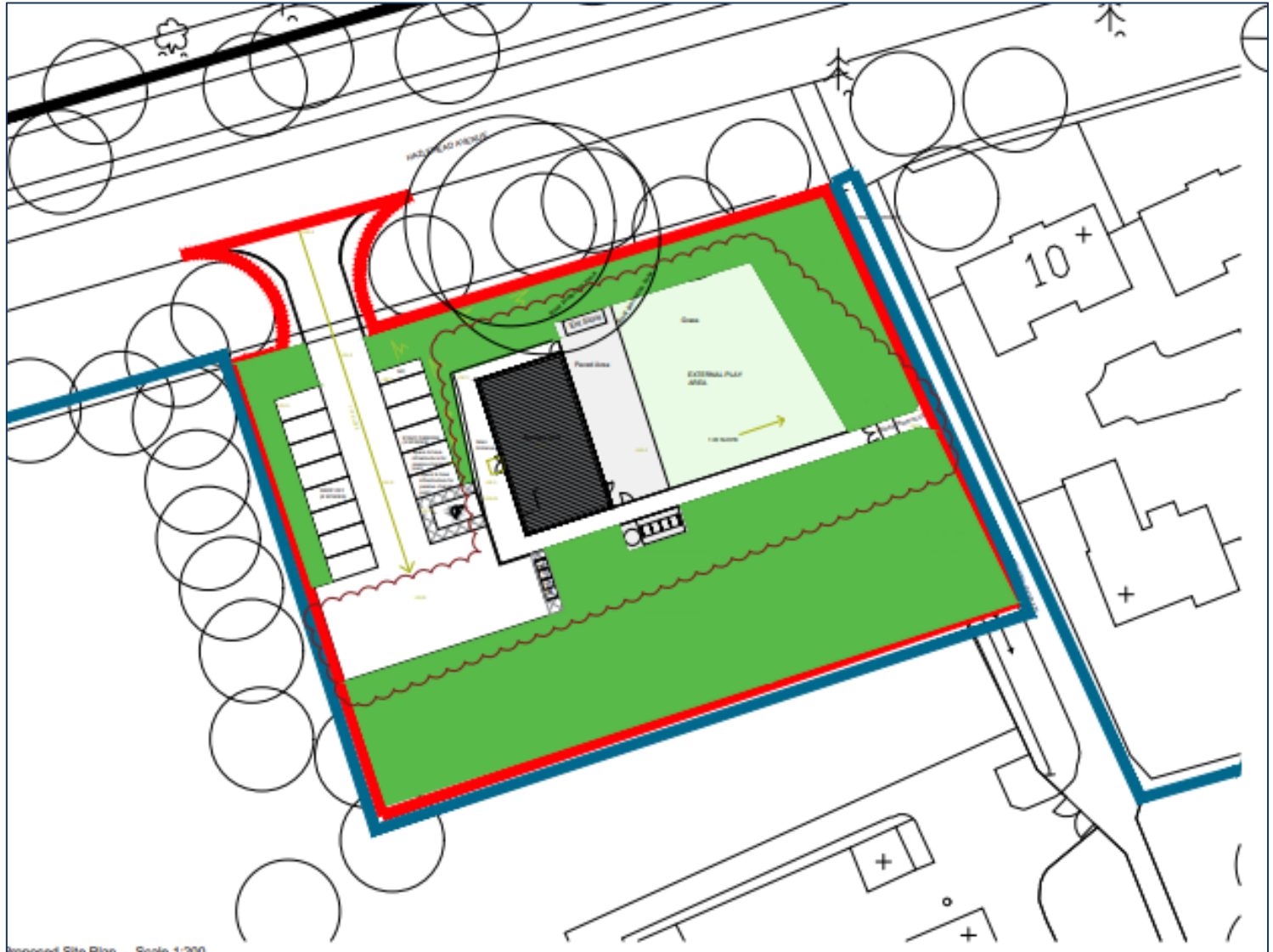
Application Site



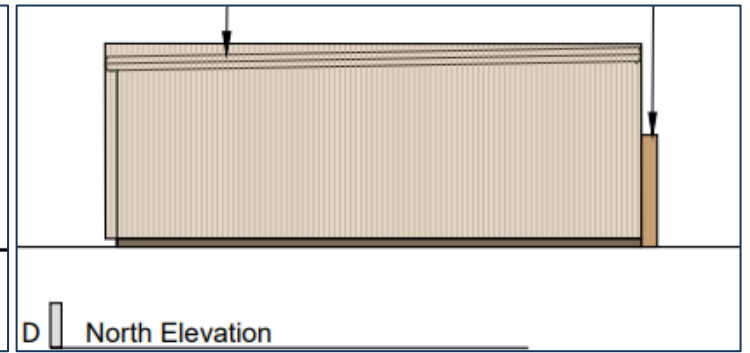
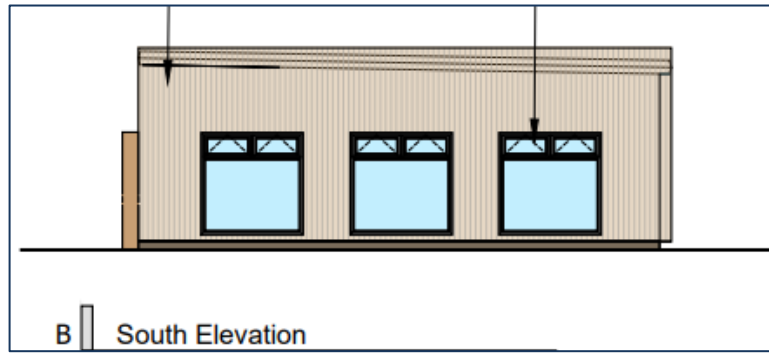
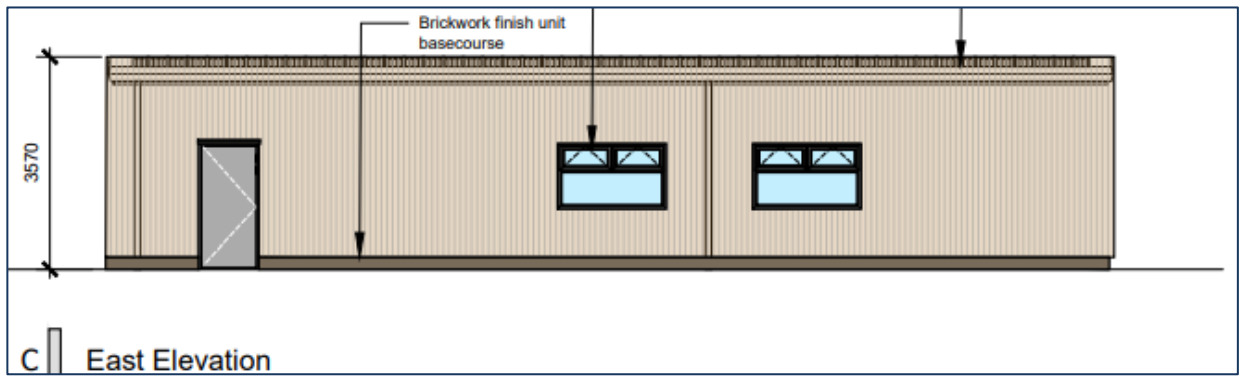
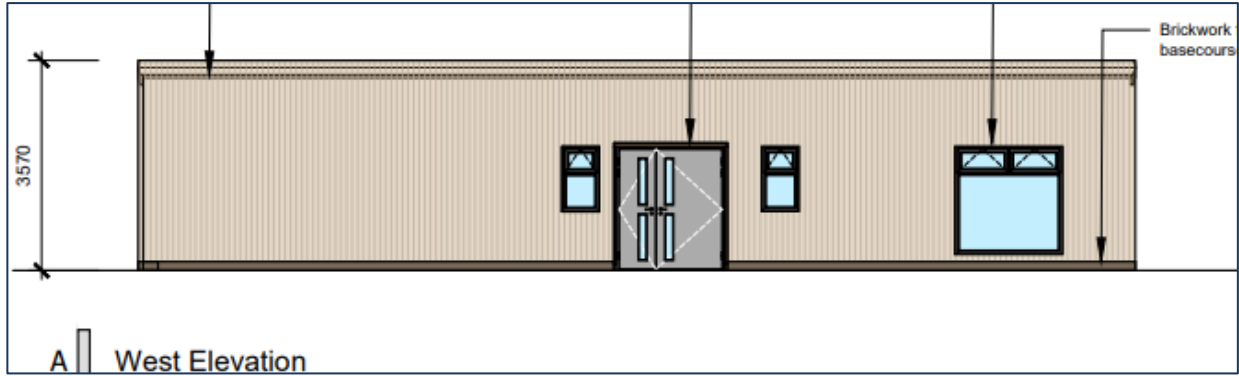
Existing Site Plan



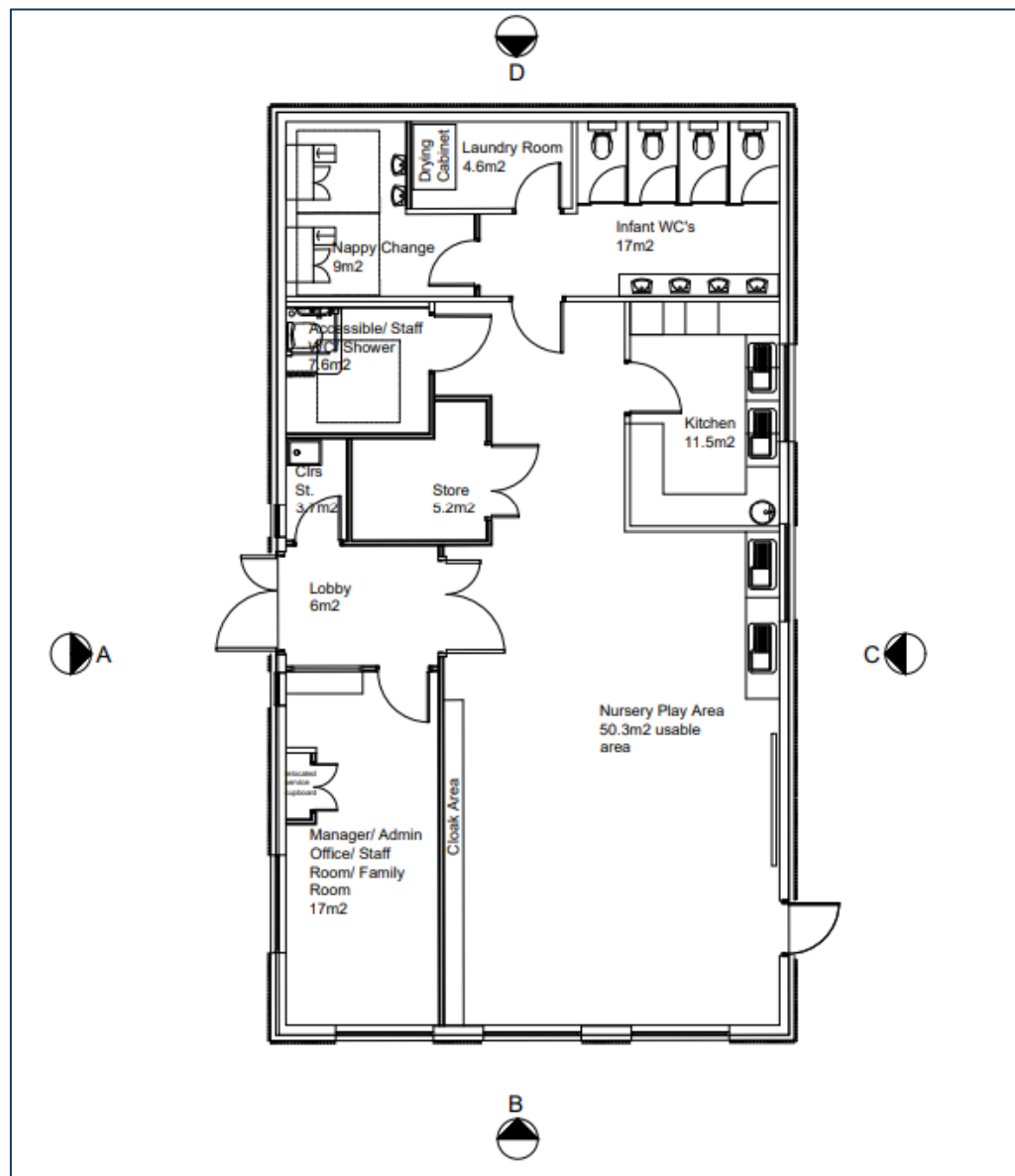
Proposed Site Plan



Elevations



Ground Floor Plans



Site Photo

Looking north



Site Photo

Looking east



Site Photo

Looking north and west



Site Photo – Proposed site access





Site Photo Core Path



North



South